

# TRANSISTOR 2N170

## with Schematics for Building

# GENERAL ELECTRIC

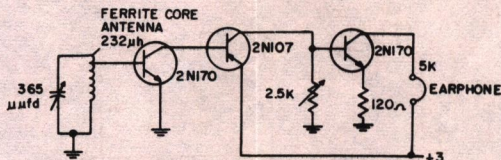
## DISTRIBUTOR SALES

### Owensboro, Kentucky

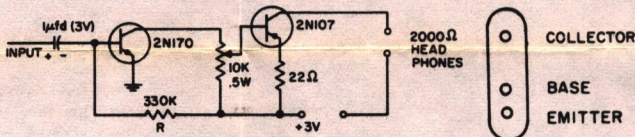
- (1) THREE TRANSISTOR RADIO
- (2) DIRECT COUPLED AMPLIFIER
- (3) PRE-AMPLIFIER

The transistor and arrangements disclosed herein may be covered by patents of General Electric Company or others. Neither the disclosure of any information herein, nor the sale of transistors by General Electric Company, conveys any licenses under patent claims covering combinations of transistors with other devices or elements, in the absence of an express written agreement to the contrary. General Electric Company assumes no liability for patent infringement arising out of any use of the transistors with other devices or elements by any purchaser of transistors or others. Although reasonable care has been taken in their preparation to insure their technical correctness, no responsibility is assumed by General Electric for any consequences of their use.

### THREE TRANSISTOR RADIO RECEIVER

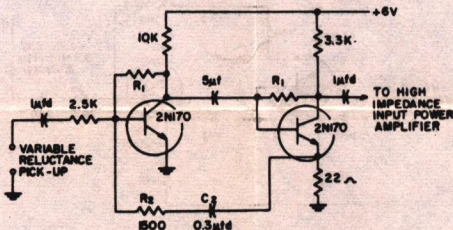


### DIRECT COUPLED "BATTERY SAVER" AMPLIFIER



NOTE: ADJUST R FOR OPTIMUM RESULTS

### VARIABLE RELUCTANCE COMPENSATED PRE-AMPLIFIER



R1 (100K - 500K) SHOULD BE CHOSEN TO MAKE COLLECTOR VOLTAGE 2.5 TO 3.5 VOLTS

CHANGING C2 AND R2 WILL VARY COMPENSATION CURVE. VALUES SHOWN GIVE APPROXIMATE COMPENSATION FOR R. I. A. A RECORDING CHARACTERISTICS