

8.3.7 Dual Relay Interface

The Dual Relay Interface (PR&E #99-419) consists of two separately controlled relays, which can be used for audio or control circuitry. For a schematic of this interface, see Section 8.4.

If You Didn't Get This From My Site,
Then It Was Stolen From...
www.SteamPoweredRadio.Com

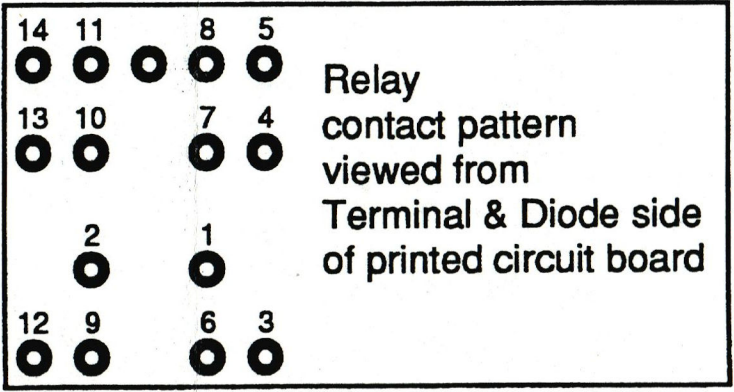
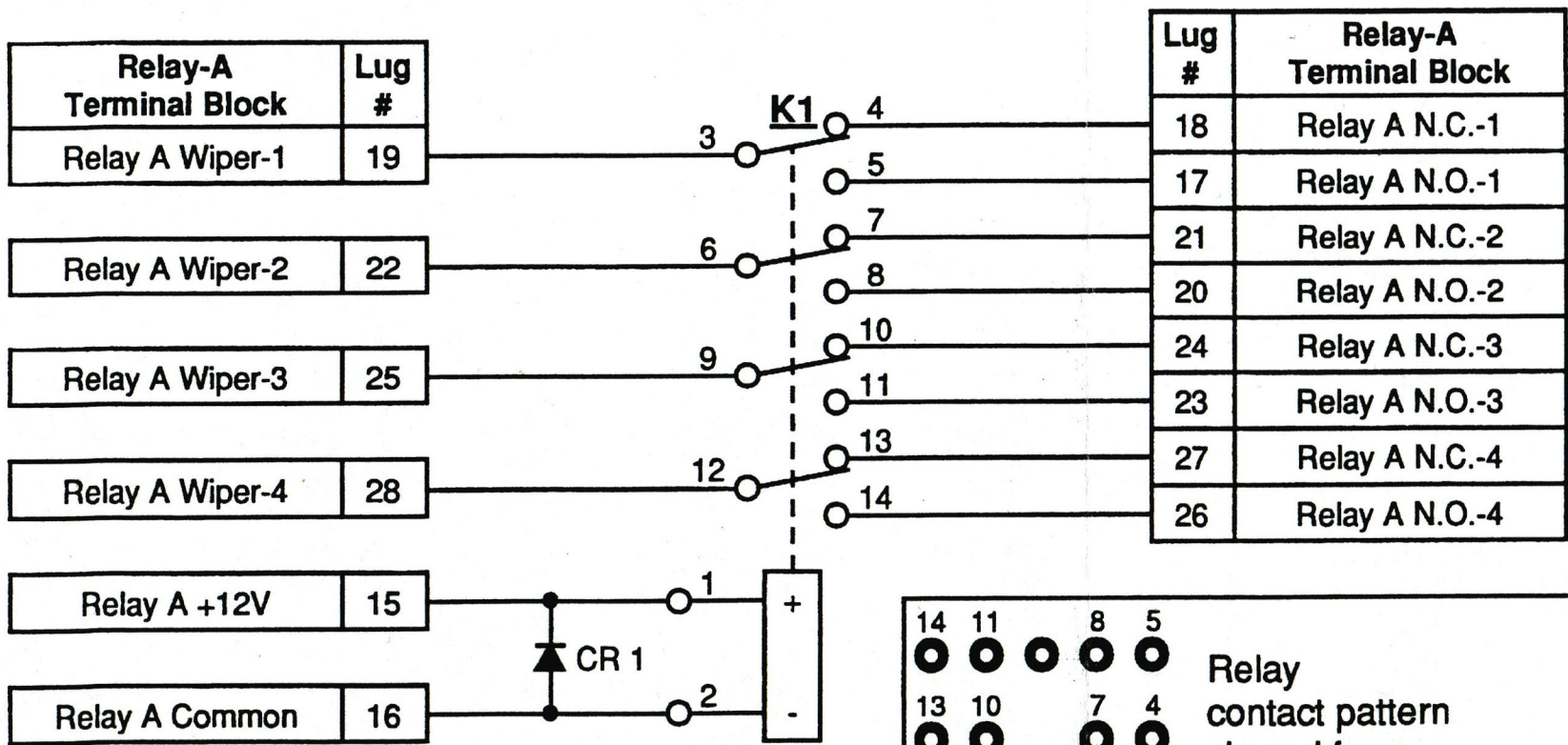
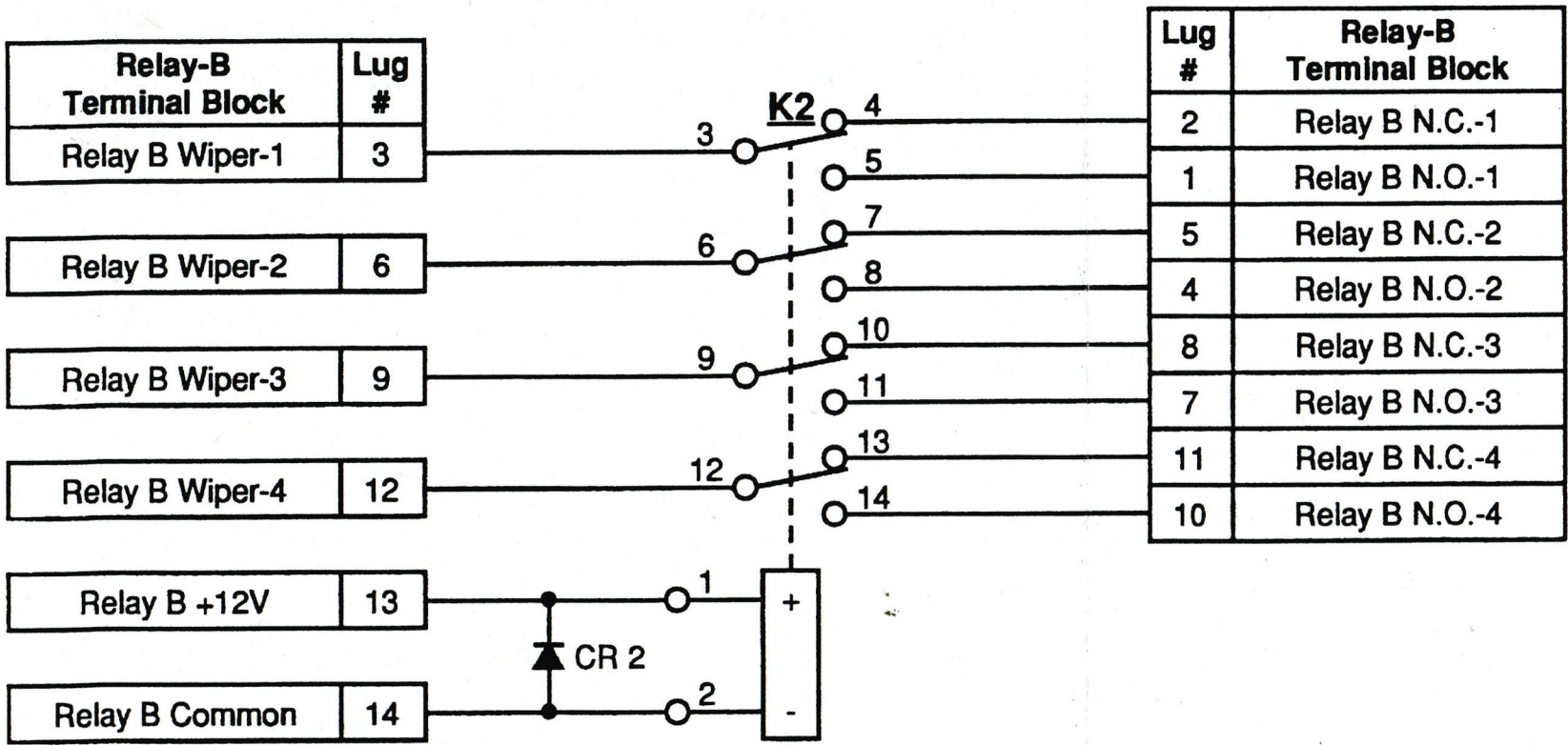


A

B

C

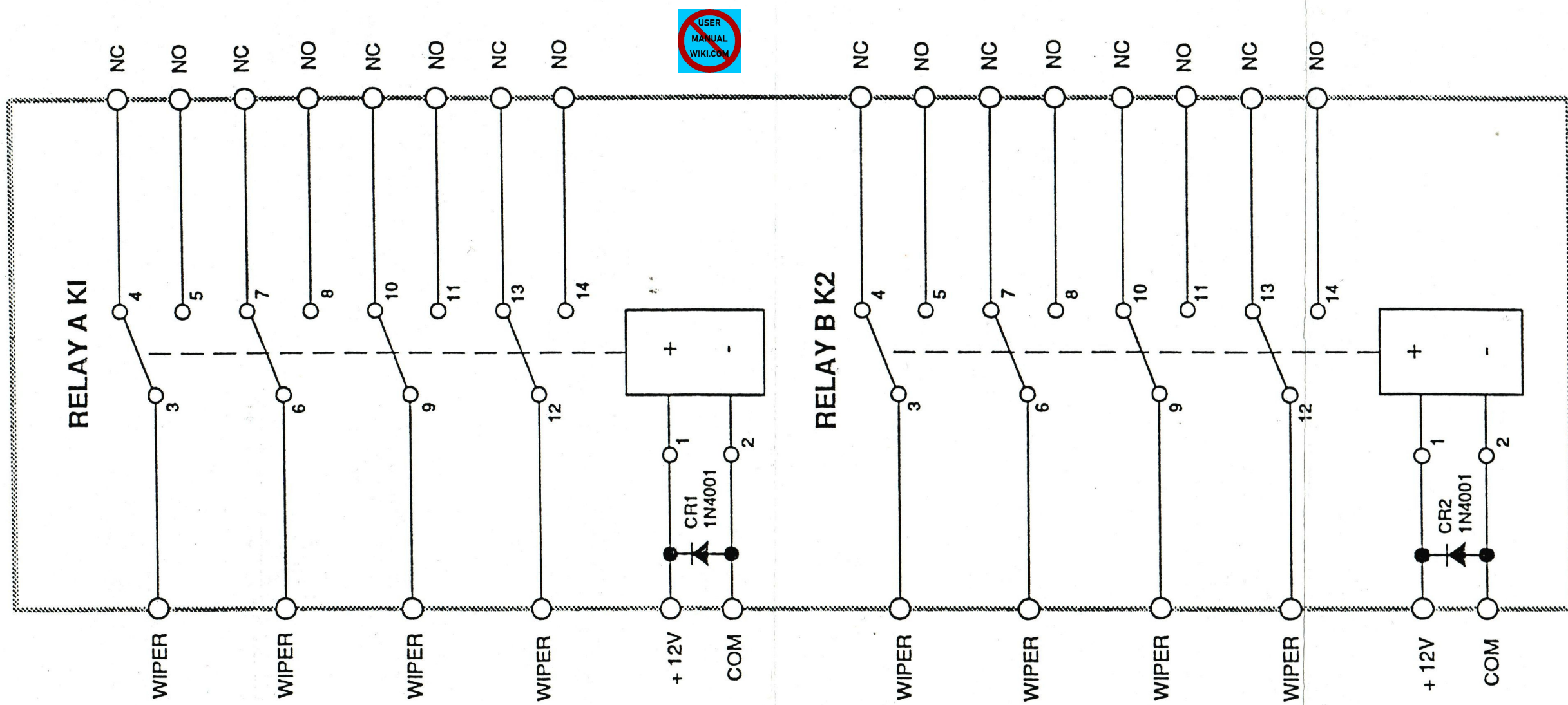
D



If You Didn't Get This From My Site,
Then It Was Stolen From...

www.SteamPoweredRadio.Com





If You Didn't Get This From My Site,
Then It Was Stolen From...
www.SteamPoweredRadio.Com

8.4.9 DUAL RELAY INTERFACE